

"The Matrix Flyer"

Hi Everyone,

We welcome you to our April edition of "The Matrix Flyer". AND we hope that you enjoy our snippets and information.....

"The Satin & Silk Ball....Glamour event of the year"
We would love for you to join us & support our major fundraising event; which enables Matrix to continue our work within the community for older lesbians:

and trust that you will be able to join us again for another fabulous night of "Glitz & Glamour".

Thank you to Our Sponsors for assistance with our Fundraising Events

- City Of Port Phillip
- Pink Sofa
- Aalsmeer Floral Studio
- Core Works
- D Vice
- Happy Medium
- Hares & Hyenas
- JOY FM
- MCV
- Rainbow Radio
- Nari Thai
- SHEBAR Grrrrlz

The Matrix Guild of Victoria Inc.
Proudly Presents
The Satin & Silk Ball
Featuring
SOUL SISTER SWING



Date: Saturday 20th April 2013
Time: 7.00pm - 12.30am
Venue: St Kilda Town Hall
99a Carlisle Street, St Kilda
BYO: Nibbles & Drinks
Light Nibbles, Tea,
Coffee & Water Provided

Ticket Prices: \$50 / \$40

Ticket Sales
Anna Cook: 0448 002 870
Sharon Stanton: 0419 992 966
Email: matrixevents@matrixguildvic.org.au

The Matrix Guild's Major fundraiser will be held on the 20 April 2013 and everyone is welcome.....Our event will be held at the grand St. Kilda Town Hall. Doors open at 7pm -1.00am. This year we will be providing an Auslan Interrupter for our hearing impaired guests. We sincerely thank those who have supported our fundraising events over the past years

The Matrix Guild Of Vic Inc fundraising activities supports our endeavors in many areas. These include:

- Accommodation for older lesbians
- Social Support
- Publications
- Best Practice Session words for both the Strategic and the Practical sessions for aged care workers
- The Matrix Guild of Victoria is an advocacy and support group for older lesbians.

Will you be Homeless when you are Old?

Matrix is investigating options to assist older lesbians who have not been able to purchase a place to live. This group may not be poor enough to be eligible for public or social housing, but nor are they rich enough to be able to afford to buy somewhere to live. Women in this group may live on the pension, but may have a nest egg of more than \$30,000. So although they may have a substantial deposit on a property, they don't have the income to service a mortgage. We are concerned that with renting becoming so expensive (most of her income can be spent in rent), that these women will quickly spend their nest egg and end up homeless in their very old

age.

Anneke and Sue have had initial discussions with the feminist housing provider (WPI) who we partnered with to buy Heather's Flats. We think that some Matrix members in this position may be interested in co-owning a flat with WPI, so that they have secure housing as long as they need it and when they wish to sell (or when they die), their proportion will probably have appreciated in value and they will have something to leave for their beneficiaries. They may also wish to sell to move away or to provide a bond for Aged Care. We are looking at options that include the woman being able to increase her percentage ownership if she is able – for instance if she receives an inheritance.

If any of this interests you, or you wish to find out more, please call Anneke on 0427 482 976 or email: housing@matrixguildvic.org.au

Matrix Speaks with Aged Care Providers:

Sue Leigh Committee Member Matrix Guild Vic Inc.

Matrix is getting more requests to provide community education and presentations to aged care providers. We have now developed training packages for both HACC and residential aged care workers. These workshops encourage workers to make lesbians feel comfortable about using their service and, hopefully, confident enough to be out to their carers and nursing staff. In the workshops we talk about the discrimination lesbians have felt in the past and how this might make them reluctant to come out and reveal their sexual orientation. We talk to services about how to create an environment that is lesbian friendly. We explain how, as lesbians, we often look for clues to see how lesbian inclusive an organisation is even if it's just a poster on the wall or a less heterosexist intake form. The feedback we have received has been positive and participants have told us that they hadn't realised the extent of discrimination that older lesbians might have experienced in the past. It has also made them aware that their lesbian clients don't necessarily want to be treated as if they were heterosexual.

Recent Training and Presentations

This March we gave a 3 hour presentation to HACC workers in Sydenham and next month we'll be talking to aged care nurses in Daylesford and leading workshops at the HACC Better Practice Conference in May.

Committee member Anneke Deutsch is also being asked to present at the Health in Difference Conference, the HACC Better Practice Conference and in June she has been asked to present at a conference in Sydney.

Monthly Profile of Matrix Committee Member: Sharon Stanton...



Sharon Stanton

– **Events Coordinator**

Sharon Stanton has been with Matrix for 6 years, has a passion for all genres of music, and coordinates the fundraising dances held by the Matrix guild twice a year. She also works full time as a director of her own company, is a manager part time for Supported group housing for adults with an intellectual disability. Bi Monthly with her partner Andrea Brien, they operate nights designed for women. "SHEBAR" which showcases DJ's and live entertainment for the women's community.

Mobile: 0419 992 966

Email: matrixevents@matrixguildvic.org.au

Social Gatherings - Monthly Coffee & Chats....



Everyone is welcome, and please feel free to pop along and join us for a delicious coffee or perhaps a bite to eat at our informal gatherings.

Our get together will continue on the -
3rd Sunday of the month 2-4pm at:

The Edinborough Hotel (Formerly Zagames) located at 430 Sydney Road Brunswick.

There is parking at the rear of the building and you will also find it available by tram (on Route #19 Tram line).

Any enquiries, please phone or text Sharon Stanton on 0419 992 966.

We look forward to catching up with you at one of our social events soon.

Lesbian Games Gatherings:

A social afternoon of games, laughter and connection. We will provide some games but please bring along your favourite ones. There is some interest in Mah Jong emerging so if you know how it's played we'd love for you to join us. Other games of interest: cards, draughts/checkers, cribbage, backgammon, jigsaw puzzles, monopoly, dominoes.

Venue: Jika Jika Community Centre
 Cnr Plant and Union Street
 Northcote

How to get there:
 Tram No. 86 Stop No. 27
 Bus No. 506
 Westgarth Train Station

Cost: Gold Coin Donation

Dates: May 11th 2013
 July 13th
 Sept 14th
 Nov 9th

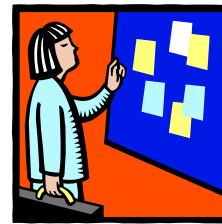
Time: 1.30 - 4.30 pm

Our New NOTICE BOARD

Our newsletters now have the facility for an advertising page for our Matrix members to promote items such as:

- ❖ Shared accommodation
- ❖ Items for sale

Please note this is not for businesses and you must be a current member of The Matrix Guild. Your advertisement will need to be business card in size and forwarded to Sharon via email



Seeking Shared Accommodation:
 Female to share a two bedroom unit. It is fully furnished and located in Reservoir. Close to public transport-train, bus and tram. Rent \$140.00 p\w + utilities. If you would like to see the unit please ring or text me on 0433 765 984.
 Marg

Sudoku Level Easy:

	4		5				3	6
	5					1		
	8	1		6				
			4			8		
9	1		3		7		6	2
		5			6			
				4		9	8	
		6					4	
1	2				8		7	

Many thanks for taking the time to read our monthly newsletter and stay tuned.

Cheers

Sharon E Stanton
 Events Coordinator
 Matrix Guild Of Vic Inc
 0419 992 966